

TRANSLATING **ENERGY** BALANCE FROM BENCH TO COMMUNITIES:

**APPLICATION OF PARALLEL
ANIMAL-HUMAN STUDIES**

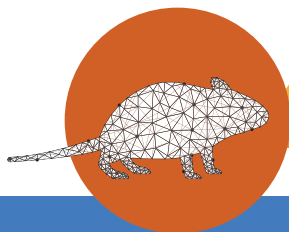
A VIRTUAL MEETING

JULY 8-10, 2021

Watch for full conference details at
[https://mdanderson.cloud-cme.com/
translatingenergy2021](https://mdanderson.cloud-cme.com/translatingenergy2021)

CALL FOR ABSTRACTS

DEADLINE: June 1, 2021
[http://bit.ly/EBConference
Abstracts](http://bit.ly/EBConferenceAbstracts)



THE UNIVERSITY OF TEXAS
**MDAnderson
Cancer Center**

Making Cancer History®