



## Connect with us.

[Referring Provider Team](#)

Monday–Friday: 8 a.m.–11 p.m. | Saturday–Sunday: 8 a.m.–7 p.m.



877-632-6789



713-563-2449



[physicianreferrals@mdanderson.org](mailto:physicianreferrals@mdanderson.org)



[Physician Referral Form](#)



[Mylink.mdanderson.org](https://mylink.mdanderson.org)

Physician Liaison: Lorie Lehrmann



[lwlehrmann@mdanderson.org](mailto:lwlehrmann@mdanderson.org)



210-391-4555

# MD Anderson The Woodlands

100 Fellowship Drive • Conroe, Texas 77384

## Clinical Services

MD Anderson provides unparalleled cancer care, and our location in The Woodlands makes our expertise and services more easily accessible. While we treat all types of cancers, our subspecialized faculty work across teams and disciplines in the diagnosis, treatment, and management of the following types of cancer, including for those with a suspicion of cancer:

- [Breast](#)
- [Colorectal](#)
- [Dermatology](#)
- [Endocrine](#)
- [Gastrointestinal](#)
- [Genitourinary](#)
- [Gynecologic](#)
- [Head and neck](#)
- [Neurologic](#)
- [Thoracic](#)

## Support Services

Clinical support services available at The Woodlands location:

- [Cancer pain management](#)
- [Cancer prevention and screening](#)
- [Chemotherapy and infusion](#)
- [Clinical nutrition](#)
- [Clinical trials](#)
- [Diagnostic imaging](#)
- [Endoscopy](#)
- [Genetic counseling](#)
- [High Risk Screening and Genetics Clinic](#)
- [Integrative medicine](#)
- [Plastic and reconstructive surgery](#)
- [Pulmonary and critical care medicine](#)
- [Radiation therapy](#)
- [Rehabilitation therapy](#), including physical, occupational and speech
- [Second opinion consultations](#)
- [Social work](#)
- [Spiritual care](#)
- [Tobacco Treatment Program](#)
- [Undiagnosed Breast Clinic](#)



## Health Care Provider Resource Center



Keeping our patients and workforce safe has always been our top priority. To learn more about our response to COVID-19, visit our [Coronavirus Precautions](#) page.



### Additional Resources

- [Clinical Tools](#)
- [Insurance Information](#)
- [Patient-Centered Oncology Care](#)
- [Physician Relations](#)

## MD Anderson Cancer Center Locations

[League City](#)

[Sugar Land](#)

[The Woodlands](#)

[West Houston](#)

[Texas Medical Center](#)

[Gynecologic Oncology Clinic at The Woman's Hospital of Texas](#)

THE UNIVERSITY OF TEXAS

**MD Anderson**  
**Cancer Center**

Making Cancer History®

# MD Anderson The Woodlands

100 Fellowship Drive • Conroe, Texas 77384

THE UNIVERSITY OF TEXAS  
**MD Anderson**  
~~Cancer Center~~  
Making Cancer History®

## Meet our team



**Elizabeth FitzSullivan, M.D.**  
Breast Surgical Oncology



**Matthew Piotrowski, M.D.**  
Breast Surgical Oncology



**Nancy You, M.D.**  
Colorectal Surgery



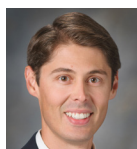
**Oliver Peacock, M.D.**  
Colorectal Surgery



**Lauren Cobb, M.D.**  
Gynecologic Oncology and Reproductive Medicine



**Miriam Lango, M.D.**  
Head & Neck Surgery



**Paul Graham, M.D.**  
Surgical Endocrinology



**Ravi Rajaram, M.D.**  
Thoracic and Cardiovascular Surgery



**Giancarlo Moscol, M.D.**  
Breast Medical Oncology



**Oluchi Oke M.D.**  
Breast Medical Oncology



**Michael Lee, M.D.**  
Gastrointestinal Medical Oncology



**Craig Kovitz, M.D.**  
Genitourinary Medical Oncology



**Jenny Vu Pozadzides, M.D.**  
Thoracic/Head and Neck Medical Oncology



**Marc Delclos, M.D.**  
Radiation Oncology



**Jay Reddy, M.D.**  
Radiation Oncology



**Valerie Reed, M.D.**  
Radiation Oncology



**Pamela Schlembach, M.D.**  
Radiation Oncology



**Lonsetta Newman, M.D.**  
Clinical Cancer Prevention



**Rhea Phillips, M.D.**  
Dermatology



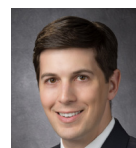
**Suresh Chari, M.D.**  
Gastroenterology, Hepatology and Nutrition



**Anam Khan, M.D.**  
Gastroenterology, Hepatology and Nutrition



**Thomas Chai, M.D.**  
Pain Medicine



**Jonathon Olenczak, M.D.**  
Plastic Surgery



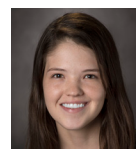
**Bruce Sabath, M.D.**  
Pulmonology Medicine



**Nicole Luckett**  
Oncology Nurse Navigator



**Karin Davin**  
Oncology Nurse Navigator



**Sara Wofford**  
Genetic Counselor



**Cindy Frazee**  
Director of Operations, Regional