

# TRANSLATING **ENERGY** BALANCE FROM BENCH TO COMMUNITIES:

**APPLICATION OF PARALLEL  
ANIMAL-HUMAN STUDIES**

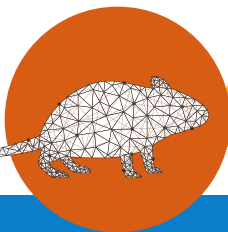
*A VIRTUAL MEETING*

**JULY 8-10, 2021**

Watch for full conference details at  
[https://mdanderson.cloud-cme.com/  
translatingenergy2021](https://mdanderson.cloud-cme.com/translatingenergy2021)

**LATE BREAKING  
ABSTRACT  
DEADLINE:**

**DEADLINE: MAY 24, 2021**  
<http://bit.ly/EBConferenceAbstracts>



THE UNIVERSITY OF TEXAS  
**MDAnderson  
Cancer Center**

Making Cancer History®

# CALL FOR LATE- BREAKING ABSTRACTS NOW OPEN

Abstracts describing work in animal models OR patients/healthy individuals related to nutrition, exercise/physical activity, and body composition at all phases of pre-clinical to community translation will be considered. Discussion should include the potential for incorporation of parallel studies in other models (i.e. animal research based on clinical or population observations, clinical studies based on animal research, population studies based on clinical or animal data) but existence of these parallel studies is not a prerequisite for consideration.

**LATE BREAKING ABSTRACT DEADLINE:  
MAY 24, 2021**

## Submission information and guidelines:

<http://bit.ly/EBConferenceAbstracts>

The information contained in this e-mail message may be privileged, confidential, and/or protected from disclosure. This e-mail message may contain protected health information (PHI); dissemination of PHI should comply with applicable federal and state laws. If you are not the intended recipient, or an authorized representative of the intended recipient, any further

review, disclosure, use, dissemination, distribution, or copying of this message or any attachment (or the information contained therein) is strictly prohibited. If you think that you have received this e-mail message in error, please notify the sender by return e-mail and delete all references to it and its contents from your systems.

THE UNIVERSITY OF TEXAS

**MDAnderson**  
**Cancer Center**

Making Cancer History®